

# Caythorpe Chronicle

The weekly news from Caythorpe Primary School

Friday 12<sup>th</sup> January 2018

## Pupil Survey Results

We completed a pupil survey in Years 5 and 6 this week. The results are extremely pleasing with children answering positively for each of the questions:

- 100% saying that they feel safe at school
- 97% saying that they enjoy coming to school
- 97% having an adult in school they can talk to if they're worried
- 94% saying that their work is interesting
- 100% stating that their teacher expects them to work hard
- 97% saying that behaviour is good in lessons and at break times
- 94% saying that assemblies are informative
- 82% saying that they get the correct amount of homework
- 94% saying that the school offers a good range of clubs

## 11+ Testing Arrangements for Current Y5 Pupils

All Y5 pupils should have received a letter regarding the arrangements for next year's selection procedure for entry to the Grammar Schools in September 2019. Please complete the Test Entry Form if you wish your child to sit the 11+ and return it to us by Friday 26 January at the latest.

Practice tests will be sent to the school in June 2018 which will be administered during the school day.

The actual 11+ tests will be taken at Caythorpe School on the following dates:

Friday 14<sup>th</sup> September 2018 - Verbal Reasoning

Friday 21<sup>st</sup> September 2018 - Non-Verbal & Spatial Reasoning

Grammar schools will then notify you of the outcome via post on Saturday 13<sup>th</sup> October 2018 so that you can then complete your school preference forms by 31<sup>st</sup> October 2018.

## Parent Survey Results

Thank you to all of the Parents/Carers who took the time to complete the survey that we sent out prior to the Christmas break. We received 26 and have now collated the results which are as follows:

Statements	Agree	Neither Agree nor Disagree	Disagree
My child is happy at school	100%	-	-
My child is safe at school	96%	4%	-
My child makes good progress at the school	96%	4%	-
My child is taught well at school	88%	12%	-
My child receives appropriate homework for their age	77%	19%	4%
My child is encouraged to work hard and do their best	96%	4%	-
My child has somebody in school who he/she can go to if he/she is worried	92%	4%	4%
The school ensures that pupils are well behaved	81%	15%	4%
The school deals effectively with bullying	81%	15%	4%
The school is well led and managed	88%	12%	-
The school responds well to my concerns	85%	12%	4%
I receive valuable information about my child's progress	84%	12%	4%
I would recommend Caythorpe Primary School to another family	96%	4%	-

The statements at the end of the survey had these main points (it is impossible to put every comment so we have collated the trends):

- Parents value the schools sense of community, open door policy and committed staff.
- Good range of extra-curricular activities.
- More information about children's progress - we will look into this.
- Improved toilets and KS2 classrooms - we will look into this.
- Stricter policy for school uniform- we will continue to encourage all children to be proud of their school uniform and the sense of belonging that it brings.
- More consistency with rewards - we will look into this.
- Some stated that there was too much homework whilst others though that there was too little

We are delighted with the results and will focus on those areas that were not as strong or which were mentioned in the comments sections and we are able to act upon.

## Topics This Term

WOW! We have had a great start to the Spring Term and the children have settled back into their school work brilliantly. Staff and pupils are already immersed in their new topics and I have witnessed some fabulous learning in every classroom.

### Enchanted Forest & Neverland

This term our big question is "Who lives in a house like this?" We will be busy reading traditional tales such as 'The Three Little Pigs' as well as finding out which materials would make a good house. In Enchanted Forest we have already enjoyed playing in our new kitchen role play area and are looking forward to building our own model homes! In Neverland we have started to look at different types of houses and have been on a hunt to look for different types of materials around school.



### Emerald City & Narnia

Their topic is "Where does all the water go?" Children will develop their skills of using maps, globes and Google Earth to locate rivers and oceans in Europe. They will develop an understanding and use the language of rivers - erosion, deposition transportation. They will also compare how a river has changed over time and research the impact on trade and history. Water also gives them the great opportunity to study the work of Claude Monet. In Science, children will learn all about electrical circuits and test materials ability to conduct electricity.

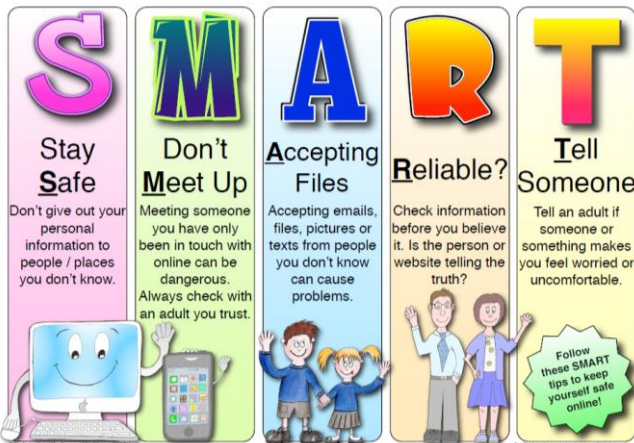


### Keeping Children Safe Online

The internet is amazing. Children can play, learn, create and connect - opening up a whole world of exciting possibilities. However it is really important to keep track of what they're doing and make sure they're staying safe.

Whether you're an online expert or you're not sure where to start here are 4 key tips to help you:

- explore the online world together
- talk to your child about staying safe online
- manage the software and tools your family use
- ensure that privacy settings are in place
- agree rules about what's ok and what's not



### Hogwarts

Hogwarts topic is "What did the Mayan's do for us?" They will be learning about how this extraordinary civilisation created beautiful writing using logograms and hieroglyphs. They will discover the fascinating inventive maths and calendar systems of the Maya in our challenging and intriguing sessions about The Maya calendar; learn about the Maya numerals and their maths system. They will also study the everyday life of the people including what they ate!

In Science the focus for the term is "Forces." They will be learning about gravity, opposing forces and air and water resistance.



### Diary Dates

Friday 9 <sup>th</sup> February	End of Term 3
Monday 19 <sup>th</sup> February	Term 4 Begins
Mon 26 <sup>th</sup> & Tues 27 <sup>th</sup> March	Parents Evenings

### Class Assembly & Cake Stall Dates

Friday 26 <sup>th</sup> January	Narnia
Friday 23 <sup>rd</sup> March	Neverland
Friday 4 <sup>th</sup> May	Enchanted Forest
Friday 22 <sup>nd</sup> June	Hogwarts

### School Clubs

Monday	KS2 Multi Skills Club
	KS2 School Newspaper Club
Tuesday	Reception - Y2 Art Club
	KS2 Art Club
	11+ Revision Club 3 - 4pm
Wednesday	Staff Meeting
Thursday	Recorders Y2 - Y6 (Lunchtime)
	Irish Dancing Y3 - Y6
Friday	Singing Y1 - Y6 (Lunchtime)



Thanks to all staff who have volunteered to give up their own time to run a club this term.